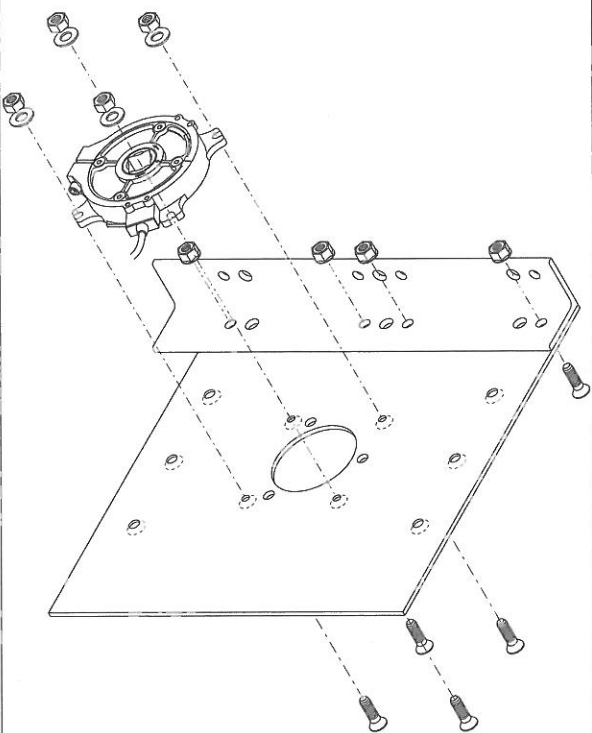


2 Installation instructions

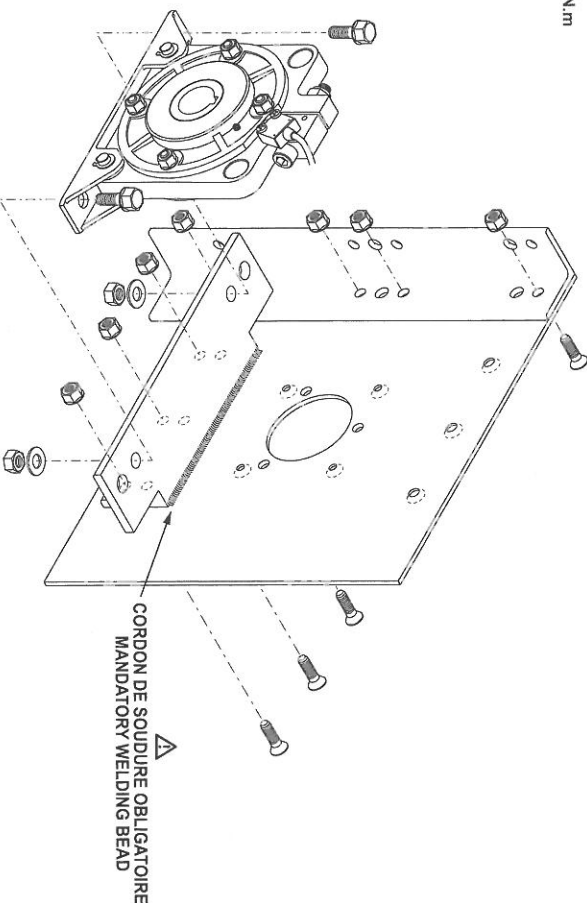
During the installation please pay attention to the following instructions:

1. Always install the safety brake opposite to the motor and outside of the plate. The direction of rotation "OBEN" corresponds to the down direction.
2. Install the safety brake with the micro-switch cable on the top for the 95 and 147 N.m. Only one direction of assembly on the plate (they function in the two directions of rotation).
3. Install the safety brake in square. In any case with a deviation not exceeding $\pm 3^\circ$. Different angles will vary the locking speed and may cause a bad operation of the system.
4. Use the safety brake fastening screws recommended §1.
5. Weld the bobbin concentrically to the tube.
6. Insert the square support pin (or the pin with key) of the shaft into the safety brake hole smoothly. Eventually check the alignment between the hole of the safety brake, on one side, and the motor hollow shaft on the other side.
7. Avoid a snapping working of the shutter since it might cause the safety brake to intervene. A well-built side slide and good profiles assure a regular working of the device.
8. Wire the safety brake to the motor or to the control box. (see wiring page 3/4 & 4/4).

95 & 147 N.m



332, 552 & 1063 N.m



2/4

3 Testing instructions

To test the operation of the safety brake:

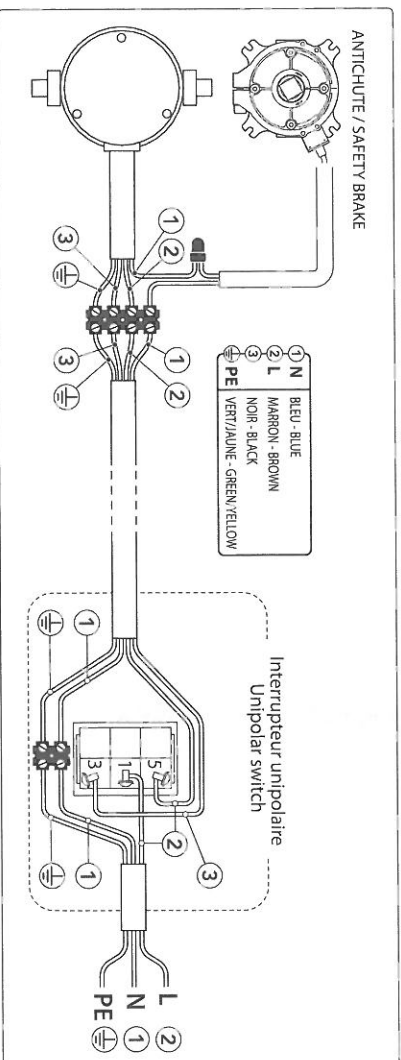
1. Check accurately the installation and make sure that all the fastening screws of the safety brake are provided with suitable washers and perfectly tightened.
2. Check the safety brake regular working while the shutter is in rotation. Since it is not possible to simulate a breakage in the transmission you can make sure of the good working of the safety brake by listening to the clicking caused by the fall of the inner locking rollers. If it can be clearly heard, the safety brake has succeeded the working test.

In case of triggering of the safety brake:

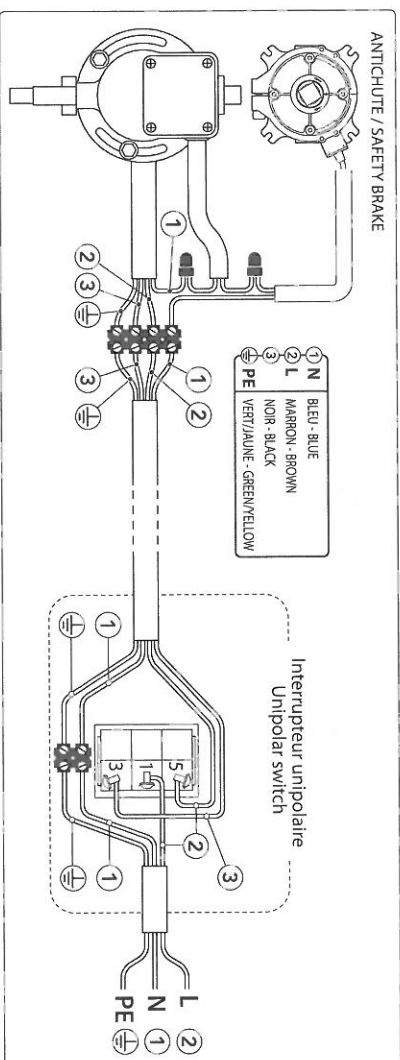
1. Secure the installation.
2. Remove and check the faulty elements - replace them if necessary.
3. Send back the safety brake to Simu for verification and reset.

4 Wiring of safety brakes

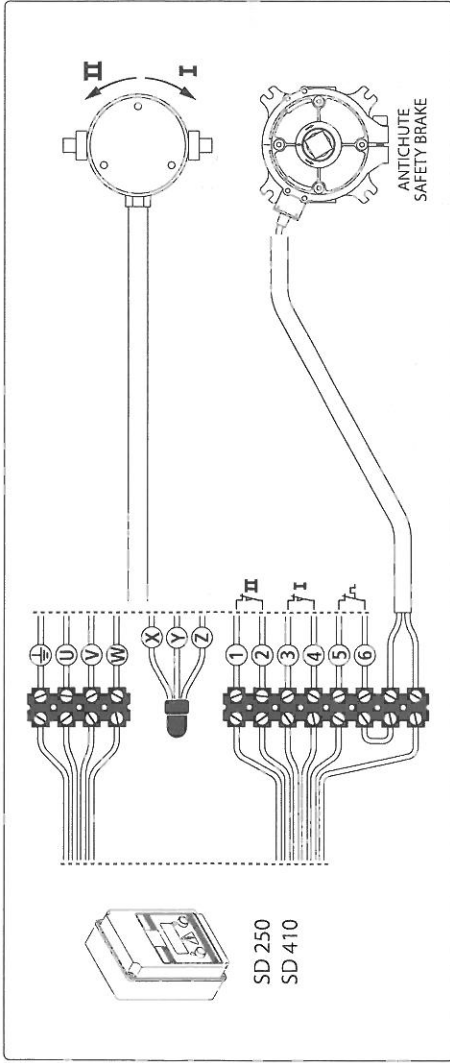
Wiring with a single-phase motor without manual override:



Wiring with a single-phase motor with manual override:

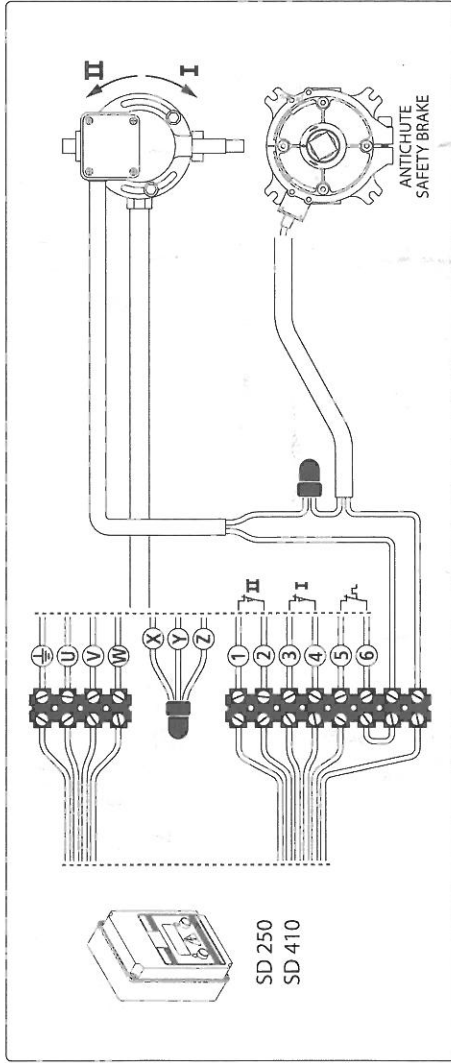


Wiring with a 3-phases motor without manual override:



SD 250
SD 410

Wiring with a 3-phases motor with manual override:



SD 250
SD 410

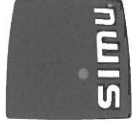
5 Maintenance

The materials and the components used for the construction of the safety brake have been specially selected in order not to require any kind of maintenance.

6 Standards

This range of products is conform to the RoHs directive and the following standard:

- EN 13241-1 : 2003
- EN 12604 : 2000
- EN 12605 : 2000



GB SAFETY BRAKES

5071775A

Read carefully these instructions before any use.

S.A.S. au capital de 5 000 000 € - Z.I. Les Girinaux - BP71 - 70103 Arc-Les-Gray CEDEX - RCS GRAY B 425 650 080 - SIRET 425 650 080 - 090 00311 - n° T.V.A. GEE FR 87 425 650 090



This product is supplied with an instruction manual which should be read carefully as it provides important information about safety, installation, operation and maintenance. This safety device must be installed by a qualified technician. Before the installation, check if the safety brake is adapted according to the weight of the shutter and the diameter of the tube. This safety device must be connected with the motor or the control box. The german original user manual is published on web site www.simu.com

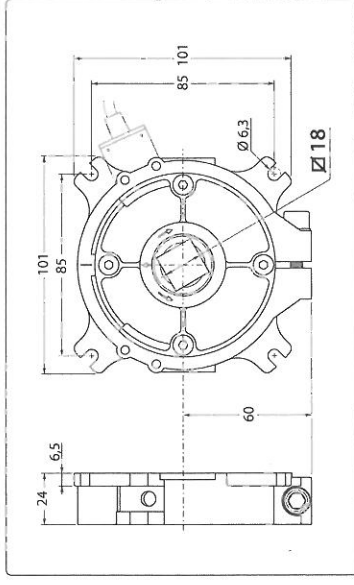
1 Technical data

The safety brake is a safety device for rolling blinds, metallic shutters and grills performing two functions:

- A bearing support for the blind shaft.
 - A mechanical brake to stop the descent of the blind if sudden acceleration occurs.
- The safety brake is made up of a central body with a hole in which the rolling blind shaft journal is inserted. The safety brake is equipped with a shock-absorbing system and a micro switch in order to disconnect the electrical supply to gear motor when the brake locks.

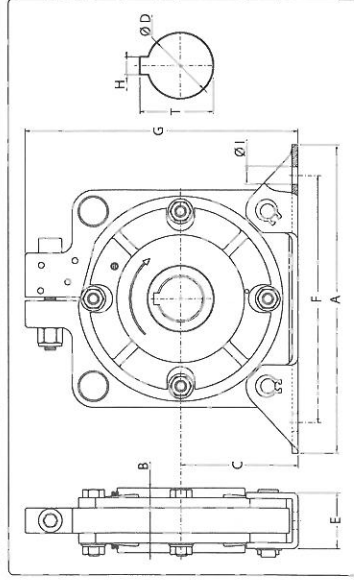
Important: choose the safety brake according to the characteristics of the installation (weight and height of the curtain, diameter of the tube and the abacus available in the SIMU catalogue

REFERENCES	2007927	2007928	2007929	2007930	2007931	2007932	2007933
CABLE LENGTH	1 m	5 m	1 m	5 m	1 m	1 m	1 m
NOMINAL TORQUE (N.m)	95	545	147	812	332	552	1063
MAX. LOCKING TORQUE (N.m)			812		796	1253	4092
OPERATING SPEED (rpm)	22	22	22	22	22	22	18
WEIGHT (kg)	1	1	1	1	4,5	8	23



Screws (not provided) :

- 4 x screws M6 x 20 DIN 912 Zn 8.8
- 4 x nuts HU6 DIN 934
- 4 x washers Ø 6,4 x Ø18 x 1,6 DIN 9021 Zn



mm	332 N.m	552 N.m	1063 N.m
A	210	260	340
B	44	50	78
C	80	100	150
Ø D 1/7	30	40	50
E	38	45	75
F	180	230	300
G	185	225	320
H	8	12	14
H'	12	14	22
Ø I	33,3	43,3	53,8

SCREWS (not provided)

SCREW (x 2)	DIN 933 M10x30 Zn 8.8	DIN 933 M12x40 Zn 8.8	DIN 933 M20x55 Zn 8.8
WASHER (x 2)	DIN 125 Ø10,5 Zn	DIN 125 Ø13 Zn	DIN 125 Ø21 Zn
NUT (x 2)	DIN 934 M10 Zn	DIN 934 M12 Zn	DIN 934 M20 Zn